

**STANDARD ARRIVAL
CHART INSTRUMENT
(STAR) - ICAO**

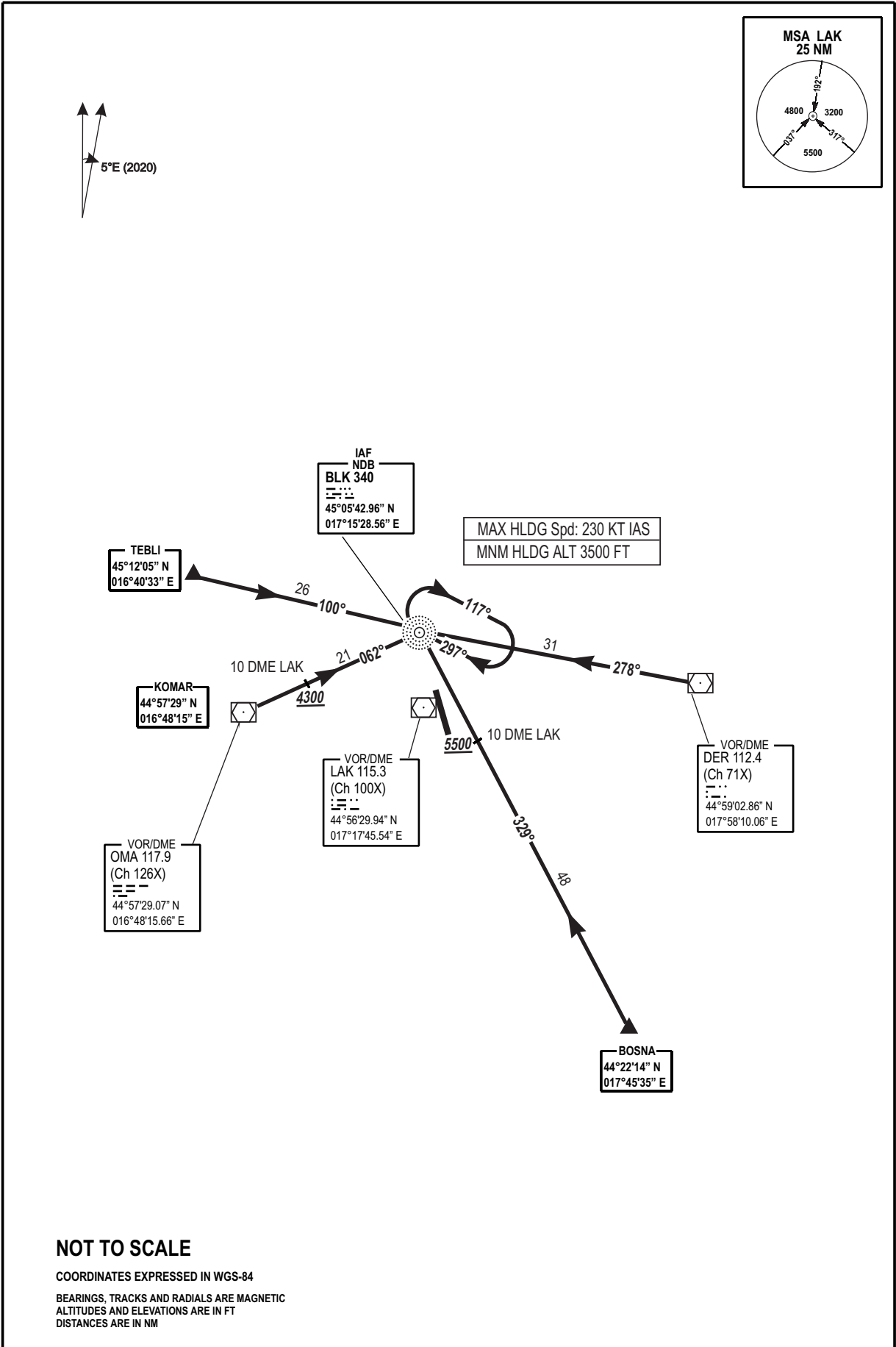
AD ELEV 401 FT

TRANSITION
ALTITUDE
10 000 FT
VAR 5°E (2020)

TWR/APP 133.075
SPARE 124.175

**BANJA LUKA (LQBK)
BLK STAR RWY 16/34**

CHG: MAG VAR, MAG BEARINGS & RADIALS, RWY DESIGNATORS, MSA BEARINGS, BLK STAR RWY 17/35 RENAMED TO BLK STAR RWY 16/34;



THIS PAGE INTENTIONALLY LEFT BLANK